

FORKLIFT

6000C



SEVERE DUTY
EQUIPMENT

01 EFFICIENT

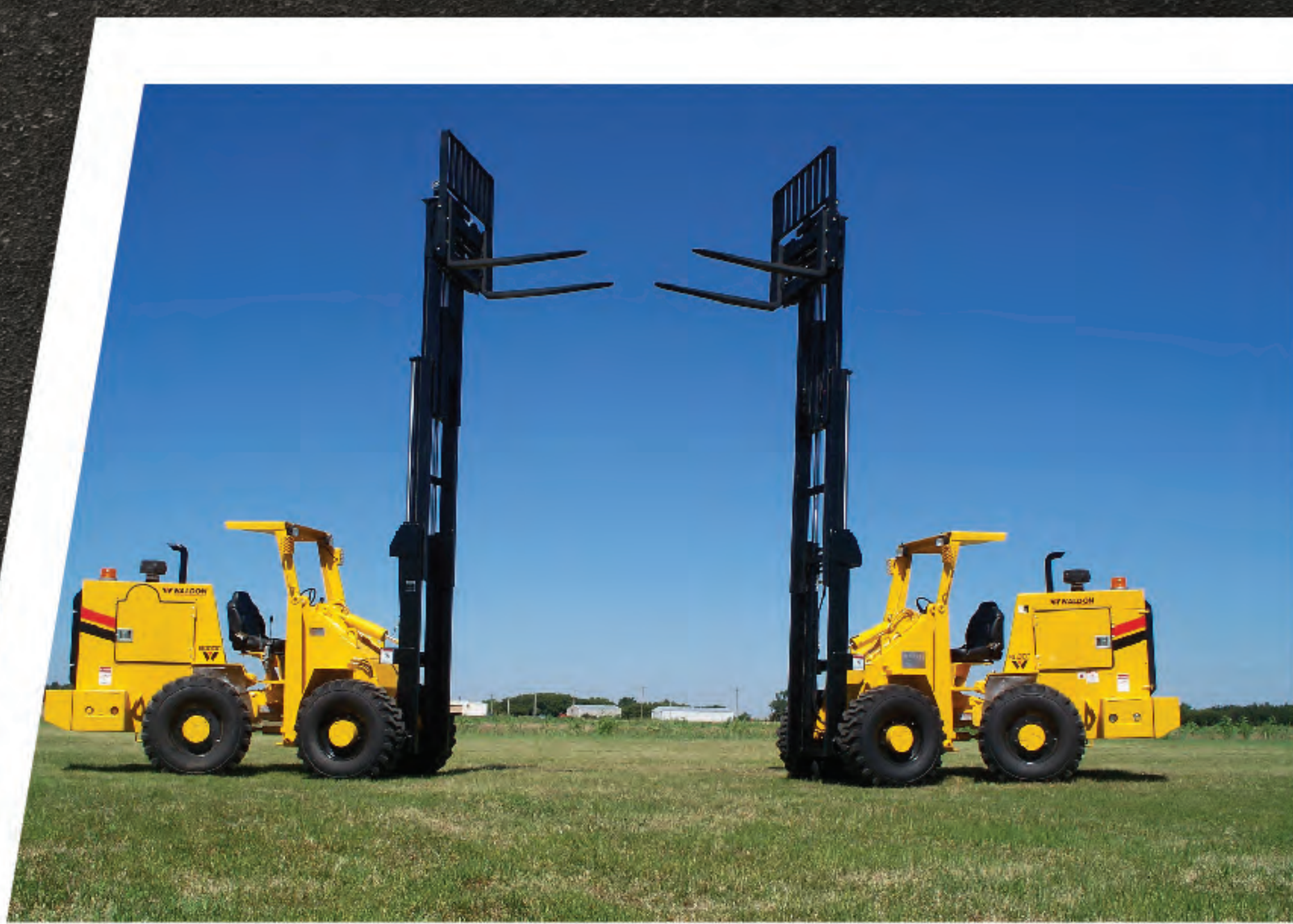
02 COMPACT

03 PERFORMANCE

04 HEAVY DUTY

05 ARTICULATING

This heavy-duty, articulating, 4-wheel drive Waldon 6000C Forklift has a load capacity of 6000 lbs. This unit was designed for large capacity industrial and rough terrain material handling in confined areas. With the high drawbar and gradability, the Waldon 6000C Forklift is without a doubt an excellent choice. This loader is designed and manufactured in the U.S.A.



www.waldonequipment.com

SPECIFICATIONS

ENGINE

Make & Model	Ford MSG-425	Yanmar 4TNV98C
Fuel.....	Gas or LP.....	Diesel
Cooling System.....	Liquid.....	Liquid
Cu. In. (liters).....	152 (2.5).....	203 (3.3)
Net HP @ 2500 RPM (kilowatts).....	63.....	72

HYDRAULIC SYSTEM

Lift Cylinders, Bore & Strokes.....	3 in. x 26 in. (76.22 mm x 660.4 mm)
Bucket Cylinder, Bore & Stroke.....	5 in. x 10 in. (127mm x 254 mm)
Pump Description.....	Gear type
Steering, Boom, Bucket Pump Capacity	26 GPM (98 lit./min) @ 2500 RPM
Priority Flow to Steering.....	Flow proportional to steering rate
Control Valve.....	Standard - 3 spool sectional
Auxiliary Hydraulics.....	Standard 3rd valve for additional unitractor attachments. Power beyond available
Filtration.....	7 micron spin-on
Relief Valve Setting.....	Drive train - 5100 PSI (35136 kPa) Boom and bucket - 2250 PSI (15511 kPa) Steering - 1500-2000 PSI
Hydraulic Cycle Time @ 2500 RPM, Standard Bucket:	
Raise.....	4.0 seconds
Bucket Dump.....	2.2 seconds
Bucket Rollback.....	1.3 seconds
Lower.....	4.3 seconds
Total Cycle.....	11.8 seconds

BRAKES

Brake Type.....	Internal sealed wet disc
Brake Description.....	SERVICE – Sealed wet disc type in front differential, (hydraulically actuated) PARKING – Spring applied hydraulically released – SAHR
Dynamic Brake.....	Hydrostatic drivetrain system

STEERING

Type.....	Articulating
Description.....	Center pivot articulating with hydraulic power steering. Front and rear tires always track.
Steering Angle (Left or Right).....	40°
Minimum Turning Radius, Inside.....	62.0 in. (1574.8 mm)
Steering Cylinders, Bore & Stroke.....	3 in. x 8 in. (76.2 x 203.2 mm)

TRANSMISSION

Type.....	Two speed hydraulic 4-wheel drive
Control.....	Foot Operated Engine Control Hand operated forward / reverse lever Mechanical high-low range lever
Description.....	Variable displacement piston type pump 37 GPM @ 5000 PSI 2-speed piston type motor
Travel Speeds @ 2500 RPM with 14 x 17.5 Tires	
Low Range, Forward or Reverse.....	0-6.5 MPH (0-10.4 Km/h)
High Range, Forward or Reverse.....	0-13 MPH (0-20.9 Km/h)

AXLES & HUBS

Type.....	Front - differential, planetary outboard hubs, S.A.H.R. brakes Rear - differential, planetary outboard hubs
Description.....	Ring gear and pinion with planetary hub



PRECISION AND
PERFORMANCE



STANDARD EQUIPMENT

- 14 x 17.5 Pneumatic Tires 10-ply
- Power Steering
- ROPS/FOPS Guard
- Safety Platform
- 3rd Valve
- Adjustable Suspension Seat
- Headlights and Rear Working Lights
- Joystick Control
- 107 DBA Reverse Alarm
- 7 Micron Hydraulic Filtration
- SAE J386 Seat Belt
- Hour Meter
- 1-850 CCA 12V Battery
- Horn, Single Note
- Antifreeze to -40° F (-40° C)
- Engine Display Includes:
 - Engine Speed, Hydraulic Oil Temperature,
 - Engine Hours, Coolant Temp, Battery Voltage
- Dual Element Air Filter with Pre-cleaner
- Emergency Brake, manual set
- 1196 lb. (542.5 kg) Counterweights
- Keyed Switch
- Industrial Yellow Enamel Paint
- Internal Wet Disc Brakes
- 4-Wheel Drive Hydrostatic Drivetrain
- Lockable Engine Compartment Doors

OPTIONAL EQUIPMENT

- Pressurized and/or Air Conditioned Cab with Defroster and Wipers
- Cab Heater
- Windshield
- Hazardous Atmosphere Alternator
- Solid Tires
- Attachments
- Drive Line Protection Kit
- Fire Resistant Fuel Cap
- PTX Exhaust Purifier with Spark Arrester Muffler
- 4th Valve Section Add-on
- Power Beyond Hydraulic Kit

Note: All specifications are in accordance with SAE standards or recommended practices, where applicable. Under our policy of improvement, Waldon reserves the right to modify specifications at any time without prior notice or obligation. Units shown may include non-standard equipment.

WALDON
an entity of Broce Manufacturing

SPECIFICATIONS

DIMENSIONS

48" x 48" Payload.....	137 in. (3480 mm)
Intersecting Aisles.....	96 in. (2438 mm)
Outside Turning Radius.....	126.5 in. (3213 mm)
Inside Turning Radius.....	62 in. (1575 mm)
Between Aisles	
48" fork, vehicle 90° to stacking bin.....	202 in. (5131 mm)

MAST SPECIFICATIONS

Mast	MFH	OAHL	FFH	Tilt	
				Fwd.	Bkd.
10 ft. 2 Rail	120 in. (3048)	94 in. (2387)	0 in.	14°	11°
12 ft. 2 Rail	144 in. (3657)	105 in. (2667)	0 in.	14°	11°
15 ft. 3 Rail	180 in. (4572)	90.5 in. (2299)	59 in. (1498 mm)	14°	11°

(MFH) -- Maximum Fork Height (OAHL) -- Over All Height Lowered
(FFH) -- Free Fork Height of Free Lift

FORKLIFT CAPACITIES

	Load Lift Height @ 24" load center	Rough Terrain	In Plant
10 ft. 2 Rail Mast & Tractor	0 - 9 ft.	6,000 lbs.	
	0 - 10 ft.	5,000 lbs.	6,000 lbs.
12 ft. 2 Rail Mast & Tractor	0 - 10 ft.	6,000 lbs.	
	10 - 11 ft.	5,000 lbs.	
	11 - 11.5 ft.	4,000 lbs.	
	0 - 12 ft.		6,000 lbs.
15 ft. 3 Rail Mast & Tractor	0 - 10 ft.	6,000 lbs.	
	10 - 12.5 ft.	4,000 lbs.	6,000 lbs.
	12.5 - 13 ft.	3,000 lbs.	
	13 - 14 ft.	2,000 lbs.	5,000 lbs.
	14 - 15 ft.	1,200 lbs.	4,000 lbs.

Rating based on U.S.A Standards
ANSI B56.1 ANSI B56.6

FORKLIFT CAPACITIES

Note: Engine @ 2500 R.P.M.

	2 Rails 10 ft.	2 Rail 12 ft.	3 Rail 15 ft.
Raise (Empty, to full height)	5.0 sec.	5.8 sec.	7.4 sec.
Lower (Empty, from full height)	8.2 sec.	9.5 sec.	12.2 sec.
Tilt (Vertical to backward)	1.0 sec.	1.0 sec.	1.0 sec.
Tilt (Backward to Vertical)	1.3 sec.	1.3 sec.	1.3 sec.

